

TMA LOWK:

KLagenfurt RADAR 126.825 (ge, en)

LOKF

Elev 1706'/520 m

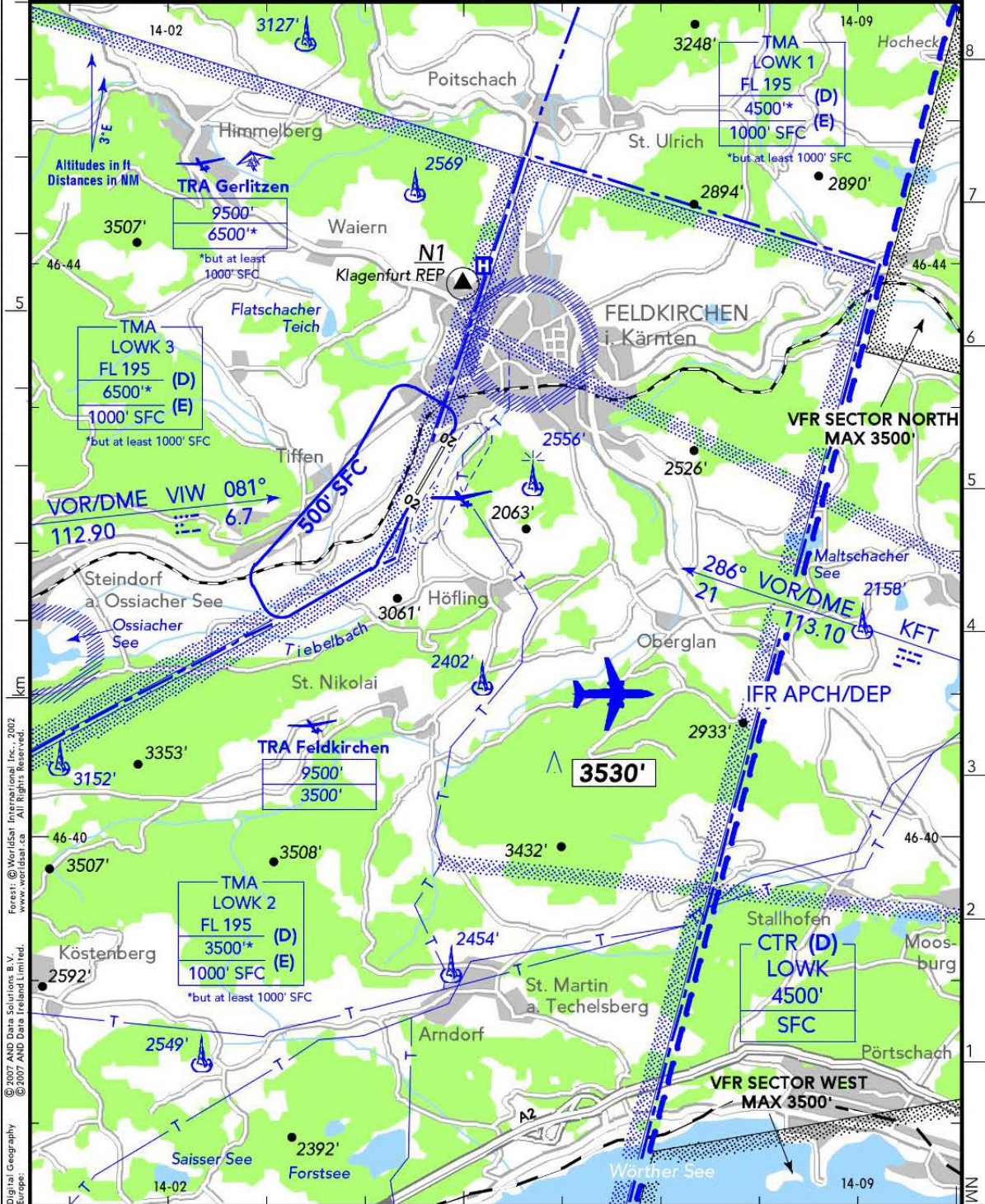
N46 42.5  
E014 04.6

1.1 NM SW Feldkirchen

(AFIS) MAX 25 NM/3000' AAL

FELDKIRCHEN AERODROME/FLUGPLATZ 122.700

RWY	ILS	RWY	ILS



Digital Geography Europe: © 2007 AND Data Solutions, B.V. Forest: © WorldSat International, Inc., 2002. www.worldsat.ca. All Rights Reserved.